

# Ties and Slurs Worksheet

www.musictechteacher.com

Name \_\_\_\_\_

A SLUR a curved line connecting two or more notes with different pitches, indicating to play the music smoothly.

Date \_\_\_\_\_

A TIE is a curved line connecting two notes of the same pitch, indicating to play them as a single note.

Circle the term below that indicates a tie or slur in the measures on the right.

1. TIE / SLUR



2. TIE / SLUR



3. TIE / SLUR



4. TIE / SLUR



5. TIE / SLUR



6. Draw a TIE between two notes of the same pitch.



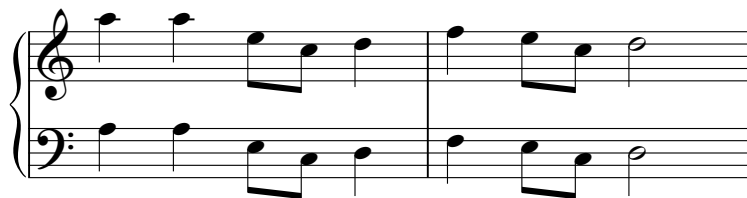
7. Draw a TIE between two notes of the same pitch.



8. Draw a SLUR between notes with different pitches.



9. Draw one SLUR between notes with different pitches in the treble clef and one SLUR in the bass clef.



10. Draw one TIE between two notes of the same pitch in the treble clef and one TIE in the bass clef.

